

100W Low PIM Cable Load

694-3800MHz

SP6938-1100-4.3

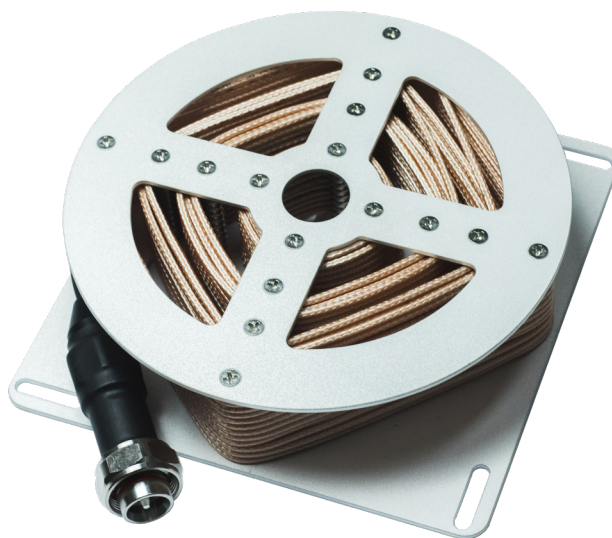


These broadband PIM-rated components suit multi-band cellular DAS designs.

They are manufactured using a ruggedized housing and offer excellent electrical and mechanical specifications.

Features:

- Suits Cellular DAS designs
- Excellent PIM rating
- High RF Power Handling
- IP65 rating suits many installations



Technical Specifications

Model Number	SP6938-1100-4.3
Frequency Range MHz	694-3800
Return Loss / VSWR	>20dB / $\leq 1.22:1$
PIM3 dBc	≥ -150 @ +43dBm $\times 2$
Power Rating W	100
Connectors	4.3-10 (male)
Impedance Ω	50
Size mm/in	150 x 150 x 70 / 5.91 x 5.91 x 2.76
Weight kg/lbs	0.8 / 1.76